

# SPECIFICATION & TECHNICAL INFORMATION SHEET



PHP Item Number: RTU-20 Corner

## DESCRIPTION:

The **RTU-20 Corner** is designed to support air handlers, blowers and exhaust fans. The support is designed for installation without roof penetrations, flashings, or damage to the roofing material. The support can be used on virtually any roofing system from flat roofs to roofs sloped up to 2 in 12. The supports should be spaced according to the specifications. Seismic and High-Wind applications are available for the system.

## INSTALLATION PROCEDURE:

### New Equipment

1. Layout isolation pads, (provided by contractor), according to the design and layout.
2. Level and square supports before any weight is applied.
3. Place equipment onto supports.
4. Fine tune supports until the unit is level.
5. Attach allthread or bracing to RTU-20C supports to hold all support units in place.

### Retro-fit

1. Lift equipment enough to remove existing support.
2. Clean area where RTU-20C is to be placed.
3. Place ISO pad provided by contractor.
4. Put RTU-20 support on pad.
5. Level and square supports before any weight is applied.
6. Place equipment onto supports.
7. Fine tune supports until the unit is level.
8. Attach allthread or bracing to RTU-20C support to hold all support units in place.

## STORAGE:

Store in the original, unopened containers, under cover, until needed for installation.

## LEED INFORMATION:

Frame/Steel

Post Consumer Recycled Content: 0%

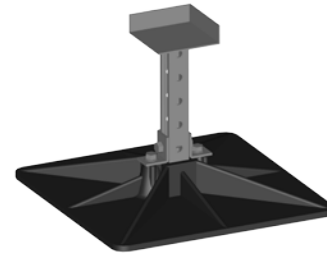
Post Industrial Recycled Content: 25%

## BASE MATERIAL:

Post Consumer Recycled Content: 80%

Post Industrial Recycled Content: 20%

Manufacturing Location:



RTU-20 Corner

## PRODUCT DATA:

### Property:

#### Base:

Size:

Weight:

Base Material:

Base Color:

Base Density:

### Carbon Steel Framing:

Carbon Steel Finish:

### Hardware:

Nuts and Washers:

### Minimum Performance:

18" x 18" x 3", 18" round

7 lbs and 10-1/2 lbs.

Injection molded high density/high impact polypropylene with UV-inhibitors and Antioxidants

Black

55.8 lb/cu ft (894 kg/cu m)

Hot Dip Galvanized per ASTM A 123

Hot Dip Galvanized or Stainless Steel

PHP Systems/Design  
5534 Harvey Wilson Drive  
Houston, TX 77020  
Tel: (800) 797-6585 or Local (713) 672-5088  
Fax: (713) 672-1170  
[www.phpspd.com](http://www.phpspd.com)  
[info@phpspd.com](mailto:info@phpspd.com)

This sheet is meant only to highlight PHP Systems/Design products and specifications. Information is subject to change without notice. PHP takes responsibility for furnishing quality materials, which meet published product specification. As neither PHP itself, nor its representatives practice architecture, PHP offers no opinion on, and expressly disclaims any responsibility for the soundness of any structure on which its products may be applied. If questions arise as to the soundness of structure, or its ability to support planned installation properly, the Owner should obtain opinions of competent structural engineers before proceeding. PHP accepts no liability for any structural failure or for resultant damages, and no PHP Representative is authorized to vary this disclaimer.