

SPECIFICATION & TECHNICAL INFORMATION SHEET



PHP Item Number: SS8-R

DESCRIPTION:

The **SS8 with Roller** is designed to support gas lines up to 2-1/2" OD, not exceeding 10" in height. The support is designed for installation without roof penetrations, flashings, or damage to the roofing material. The support can be used on virtually any roofing system from flat roofs to roofs sloped up to 2 in 12. The supports should be spaced according to the specifications. Seismic and High-Wind applications are available for the system.

INSTALLATION PROCEDURE:

New Pipe

1. Layout isolation pads, (provided by contractor), according to the design and layout.
2. Layout SS8-R supports per spacing specifications or PHP layout.
3. Run pipe on roller.
4. Adjust roller height so weight of system is evenly distributed.

Retro-fit

1. Lift pipe, (enough to remove existing support).
2. Clean area where new support is to be placed.
3. Place ISO pad, (provided by contractor).
4. Put SS8-R support on pad.
5. Lower pipe on roller.
6. Adjust roller height so weight of system is evenly distributed.

STORAGE:

Store in the original, unopened containers, under cover, until needed for installation.

LEED INFORMATION:

Frame/Steel

Post Consumer Recycled Content: 0%

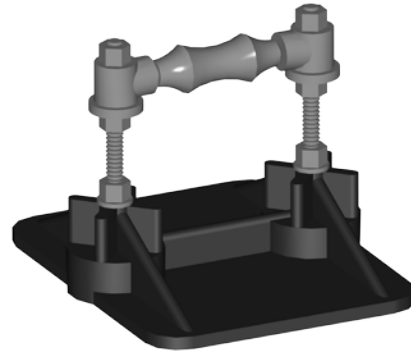
Post Industrial Recycled Content: 25%

BASE MATERIAL:

Post Consumer Recycled Content: 80%

Post Industrial Recycled Content: 20%

Manufacturing Location:



SS8-R

PRODUCT DATA:

Property:

Base:

Size:

Weight:

Base Material:

Base Color:

Base Density:

Rod Type:

Diameter:

Length:

Finish:

Carbon Steel Roller:

Roller Type:

Carbon Steel Finish:

Hardware:

Nuts and Washers

Minimum Performance:

8" x 10" x 2-1/2"

3 lbs

Injection molded high density/high impact polypropylene with UV-inhibitors and Antioxidants

Black

55.8 lb/cu ft (894 kg/cu m)

1/2"

10"

Hot Dip Galvanized or Stainless Steel

3" Cast Iron Roller with Malleable Sockets

Hot Dip Galvanized per ASTM A 123

Hot Dip Galvanized or Stainless Steel

PHP Systems/Design
5534 Harvey Wilson Drive
Houston, TX 77020
Tel: (800) 797-6585 or Local (713) 672-5088
Fax: (713) 672-1170
www.phpsd.com
info@phpsd.com

This sheet is meant only to highlight PHP Systems/Design products and specifications. Information is subject to change without notice. PHP takes responsibility for furnishing quality materials, which meet published product specification. As neither PHP itself, nor its representatives practice architecture, PHP offers no opinion on, and expressly disclaims any responsibility for the soundness of any structure on which its products may be applied. If questions arise as to the soundness of structure, or its ability to support planned installation properly, the Owner should obtain opinions of competent structural engineers before proceeding. PHP accepts no liability for any structural failure or for resultant damages, and no PHP Representative is authorized to vary this disclaimer.